



GMT MONTHLY MEMBERSHIP PROGRESS REPORT

Results as of: 6/30/2020

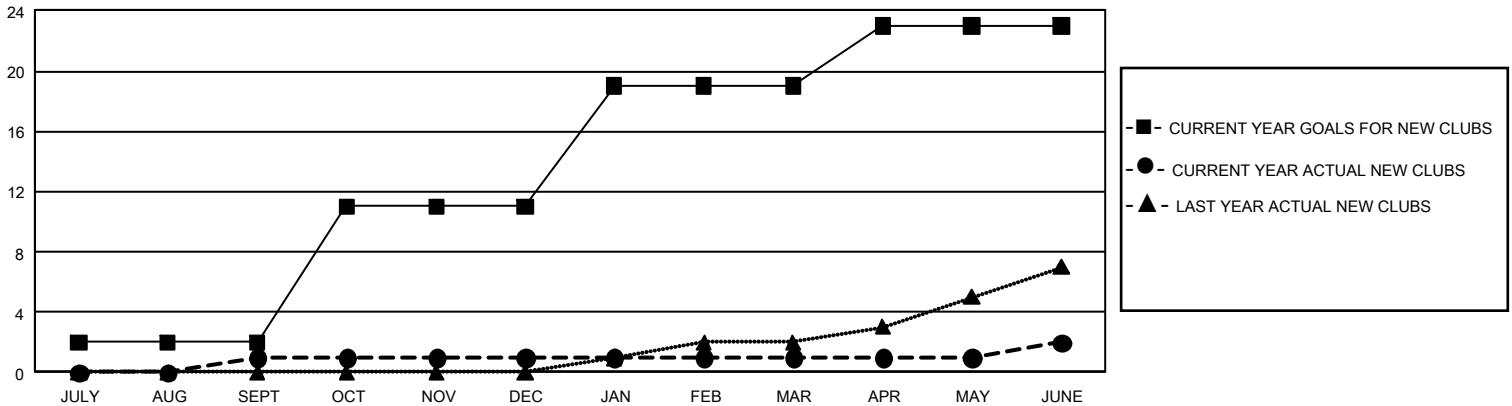
GMT Constitutional Area 8, Group F

GMT: OPEN

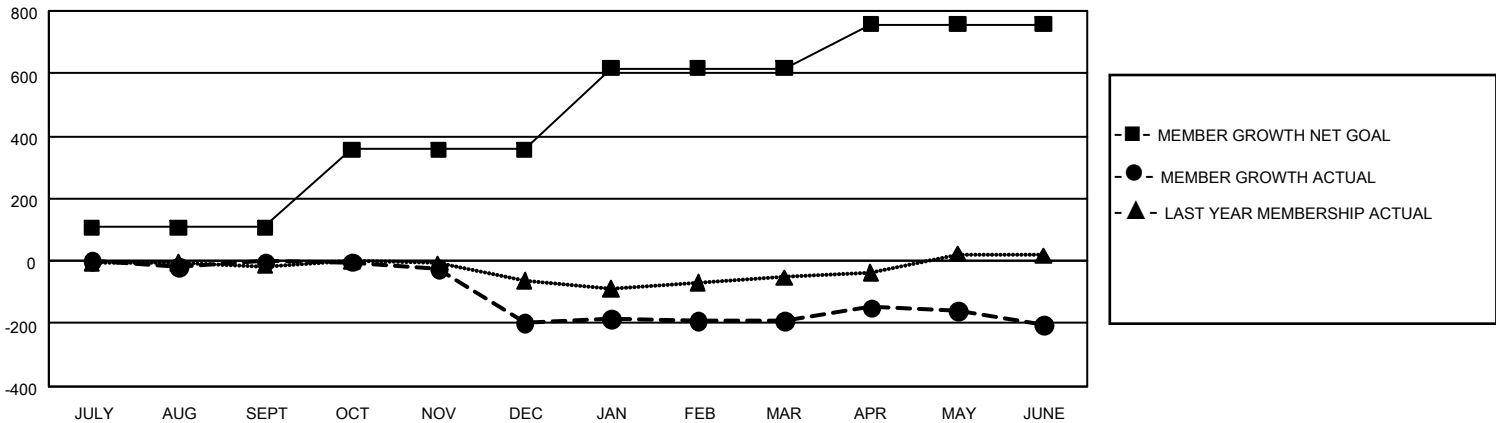
REPORT DOES NOT INCLUDE CLUBS IN UNDISTRICTED AREAS.

Clubs				Members			
RESULTS FOR 2019-2020				RESULTS FOR 2019-2020			
QUARTER	NEW CLUB GOAL	NEW CLUBS	DROPPED CLUBS	QUARTER	MEMBER GROWTH NET GOAL	MEMBER GROWTH ACTUAL	DROPPED MEMBERS ACTUAL (including transfers)
JULY/AUG/SEPT	6	1	1	JULY/AUG/SEPT	321	73	69
OCT/NOV/DEC	27	0	7	OCT/NOV/DEC	750	42	230
JAN/FEB/MAR	24	0	0	JAN/FEB/MAR	780	94	34
APR/MAY/JUNE	12	1	0	APR/MAY/JUNE	420	150	141

GOALS AND ACTUAL NEW CLUBS CUMULATIVE



GOALS AND ACTUAL MEMBERS CUMULATIVE



DROPPED CLUBS: 8	60 CLUBS OF 106 ADDED 1 OR MORE NEW MEMBERS	<u>GENDER DISTRIBUTION</u> MALE 1,778 (71.90%) FEMALE 695 (28.10%)
<u>DROPPED MEMBERS</u> DECEASED 22 CLUB CANCELLED 124 OTHER 328 <hr/> TOTAL 474	CLICK HERE FOR CUMULATIVE MEMBERSHIP DATA	TOTAL FAMILY UNIT MEMBERS 240 FAMILY MEMBERS PAYING HALF DUES 122